

# Y6 SATs

## Sats papers 2020

Sats week: w/c 11th May 2020

## In school support and wellbeing

- Full curriculum taught throughout the year
- Extra support sessions with teachers / TAs
- Booster classes in the Spring term
- Half termly assessment week in the style of SATs
- Daily mile
- SATs week - breakfast, daily mile, warm up sessions, small groups, afternoon mindfulness
- Home learning questions in the style of SATs
- We tell children that we want them to try their best but would like to remove the anxiety and feeling of pressure from school and home

Grammar - Monday 11th May

- 2 x papers
- Grammar (50 marks, 45 minutes)
  - Spelling (20 marks, approx 20 mins)

Which sentence is a **command**?

Tick **one**.

You should bring a coat. ☐

You will need a coat in case it rains. ☐

I am going to bring a coat. ☐

Bring a coat in case it rains. ☐

Draw a line to match each **prefix** to a word to make **four** different words.  
Use each prefix only once.

Prefix	Word
im	correct
in	mature
en	fortune
mis	able

Insert a **subordinating conjunction** to show that we ate lunch and listened to music at the same time.

We listened to the music \_\_\_\_\_ we ate our lunch.

Reading paper - Tuesday 12th May

- Answer booklet + reading text booklet (60 mins, 50 marks)
- 3 texts
- range of questions on retrieval, inference, language for effect and themes and conventions.

Look at page 10.

What impressions do you get of Em Sharp at this point in the extract?

Give **two** impressions, using evidence from the text to support your answer.

Impression	Evidence

Number the following sentences from 1–5 to show the order in which they happen in the poem.

The first one has been done for you.

The poet arrives in France. ☐

The poet lives with his grannie. ☒ 1

The poet is injured. ☐

The poet's grannie visits him. ☐

The poet writes to his grannie. ☐



- Arithmetic (30 mins, 40 marks)
- 2 x reasoning (40 mins 35 marks)

1 mark

1 mark

1 mar

2 marks

0.00

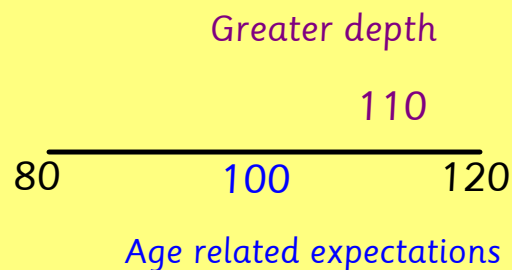
1.02

### Reporting at the end of Year 6

Written reports from teacher: indicate working towards standard, achieved expected standard or working at greater depth within the expected standard.

Sats result letter:

- Writing teacher assessment
- Sats paper raw scores
- Sats paper scaled score

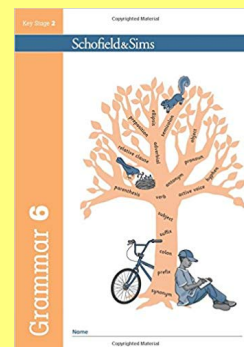
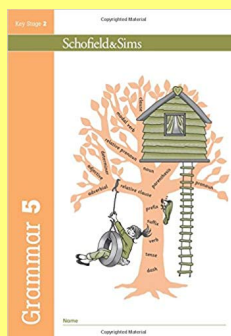
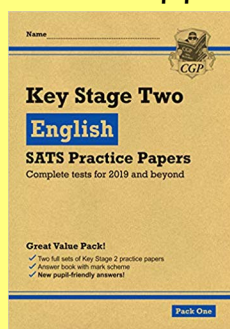
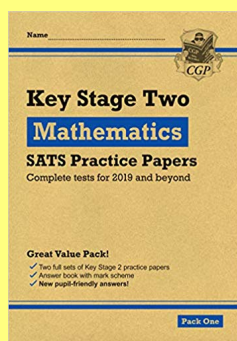


Will only say has achieved standard/has not achieved standard.

#### Test Results:

<b>English Grammar, Punctuation, Vocabulary and Spelling</b>	
Grammar, Punctuation & Vocabulary Test	45
Spelling Test	11
Grammar, Punctuation, Vocabulary and Spelling Test Total	56
Grammar, Punctuation, Vocabulary and Spelling Scaled Score	110
Grammar, Punctuation, Vocabulary and Spelling Outcome	Achieved Standard
<b>English Reading</b>	
Reading Test	44
Reading Scaled Score	116
Reading Outcome	Achieved Standard
<b>Mathematics</b>	
Mathematics Arithmetic Test	37
Mathematics Reasoning Test 1	33
Mathematics Reasoning Test 2	34
Mathematics Total Test	104
Mathematics Scaled Score	114
Mathematics Outcome	Achieved Standard

## Support materials



Maths and English available

Amazon £5.50 each.

